



**ROSS MBA**

**Global Program Class of 2018  
Japan Session Information**



# Osaka Area



HYOGO

Sasayama  
篠山

Kyoto  
京都

Otsu  
大津

Kusatsu  
草津

Kasai  
加西

Himeji  
姫路

Miki  
三木

Takatsuki  
高槻

Kakogawa  
加古川

Neyagawa  
寝屋川

Kobe  
神戸

Amagasaki  
尼崎

Osaka  
大阪

Nara  
奈良

JR Osaka Station

Cross-Wave Umeda

Akashi  
明石

Sakai  
堺

Kashiwara  
橿原

Harima-nada Sea  
播磨灘

Osaka Bay  
大阪湾

Kansai Airport

OSAKA

Mount Kongō  
金剛山

NARA

Awaji  
淡路

Sennan  
泉南

Awaji Island  
淡路島

Sumoto  
洲本

Wakayama  
和歌山

Koya

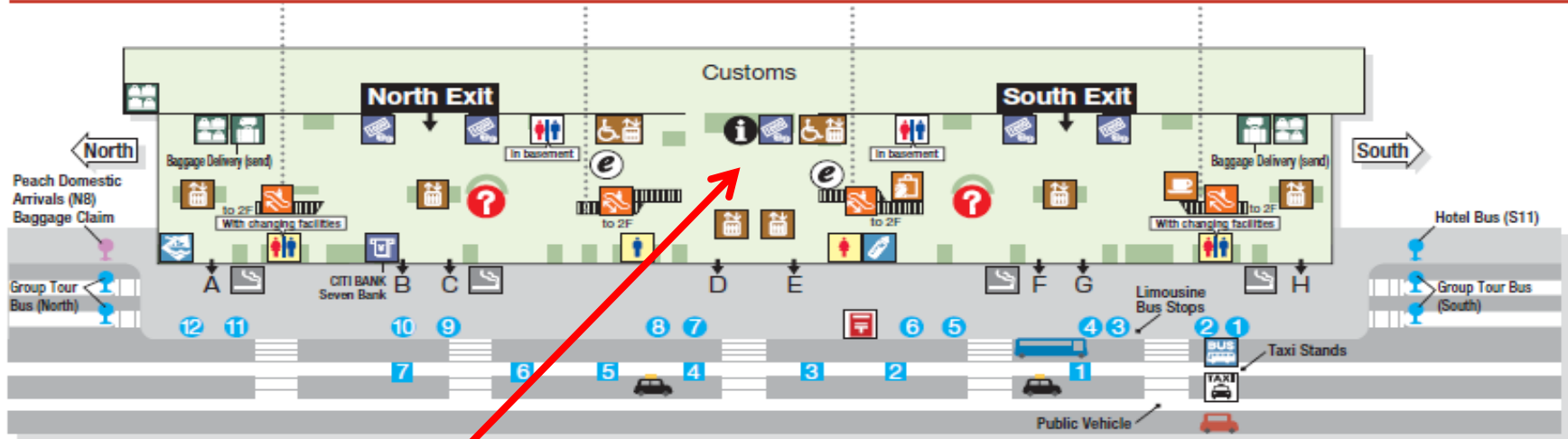
Nara



# Kansai International Airport

## 1F International Arrivals, Peach Domestic Arrivals, Taxi Stands, Limousine Bus Stops

\*Note: For details about the AeroPlaza and Hotel Nikko Kansai Airport area, please consult the Service Facilities reverse side AEROPLAZA / Hotel Nikko Kansai Airport section.  
For details on Peach domestic departures, please consult the front side AeroPlaza 2F Peach Domestic Departures section.



TAXI	Taxi Stands
1	Reserved taxis (South)
2	Taxis for Wakayama
3	Short distance taxis
4	Handicapped only
5	Long distance taxis
6	Taxi vans
7	Reserved taxis (North)

BUS	Limousine Bus Stops
1	Observation Hall "Sky View", Night Bus (Rinku Town/Izumisano)
2	Awaji/Aburahi/Tokushima, Senboku Newtown/Kongo, Kawachinagano, Sakaihigashi/Nakamozu
3	Wakayama, Nanko/Tenpozan/Universal Studios Japan™, Ibaraki
4	Amagasaki, Nishinomiya
5	Osaka Station (Chayamachi/Shin-Umeda City/Senri Newtown/Senri Chuo), Himeji
6	Kobe Sannomiya (Rokko Island/Minotani/Tanigami Sta.)
7	Kintetsu Uehommachi (Shinsaibashi/Osaka Business Park), Takamatsu/Sakaide/Marugame
8	Kyoto, Osaka Airport
9	Nara, Kintetsu Gakuenmae/Gakkentoshi, Yamato-yagi
10	Keihan Moriguchi, Neyagawa/Hirakata/Kuzuha
11	Namba (Osaka City Air Terminal), Okayama, Tsuyama
12	Ferry Terminal, Night Bus (Rinku Town/Izumisano), Rinku Premium Outlets (from March 24th)



**Meeting Point for Airport Pick up**  
**“In front of the Tourist Information Counter”**  
**(between the exit gates D&E)**

# Arrival in Osaka on Monday, March 27

- ❖ Students flying in to Kansai International Airport
  - Pick up at 1:00 pm; will arrive at Cross-Wave around 2:00 pm.
  - Please send your flight number and arrival time info to Takiko at [takiko@umich.edu](mailto:takiko@umich.edu).
- ❖ Please send your travel plan to Japan and arrival time at Cross-Wave to Takiko even if you do not plan to use the pick up service; GMBA office should have travel plan information of all students.

# Alternate Option from Kansai Airport to X-Wave

- ❖ Taxi is convenient but expensive.
  - ❖ Takes about 50 minutes under normal traffic condition and cost about 17,000 Yen (\$150).
- ❖ Shuttle bus to Osaka Station and then taxi to Cross-Wave
  - Use bus #5 to JR Osaka Station (get off at Shin-Hankyu Hotel bus stop).
    - Bus runs every 20 min. and cost 1,500 Yen
  - Use taxi from Shin-Hankyu Hotel to Cross-Wave
    - Cross-Wave is 1.3 km away and cost about 800 Yen (\$7).
    - Takes approximately 15 minutes to walk.
    - Refer to slide 7 for location and direction information.
- ❖ Airport public transportation information:  
<http://www.kansai-airport.or.jp/en/access/index.html>



## Shin Osaka Station

Shinkansen (high speed train) stops at Shin-Osaka Station not JR Osaka Station.

Shin-Osaka Station is 5 Km north of X-Wave and it takes about 10 min. by taxi.

## Osaka Downtown

## X Wave Umeda

## JR Osaka Station

## Osaka Castle





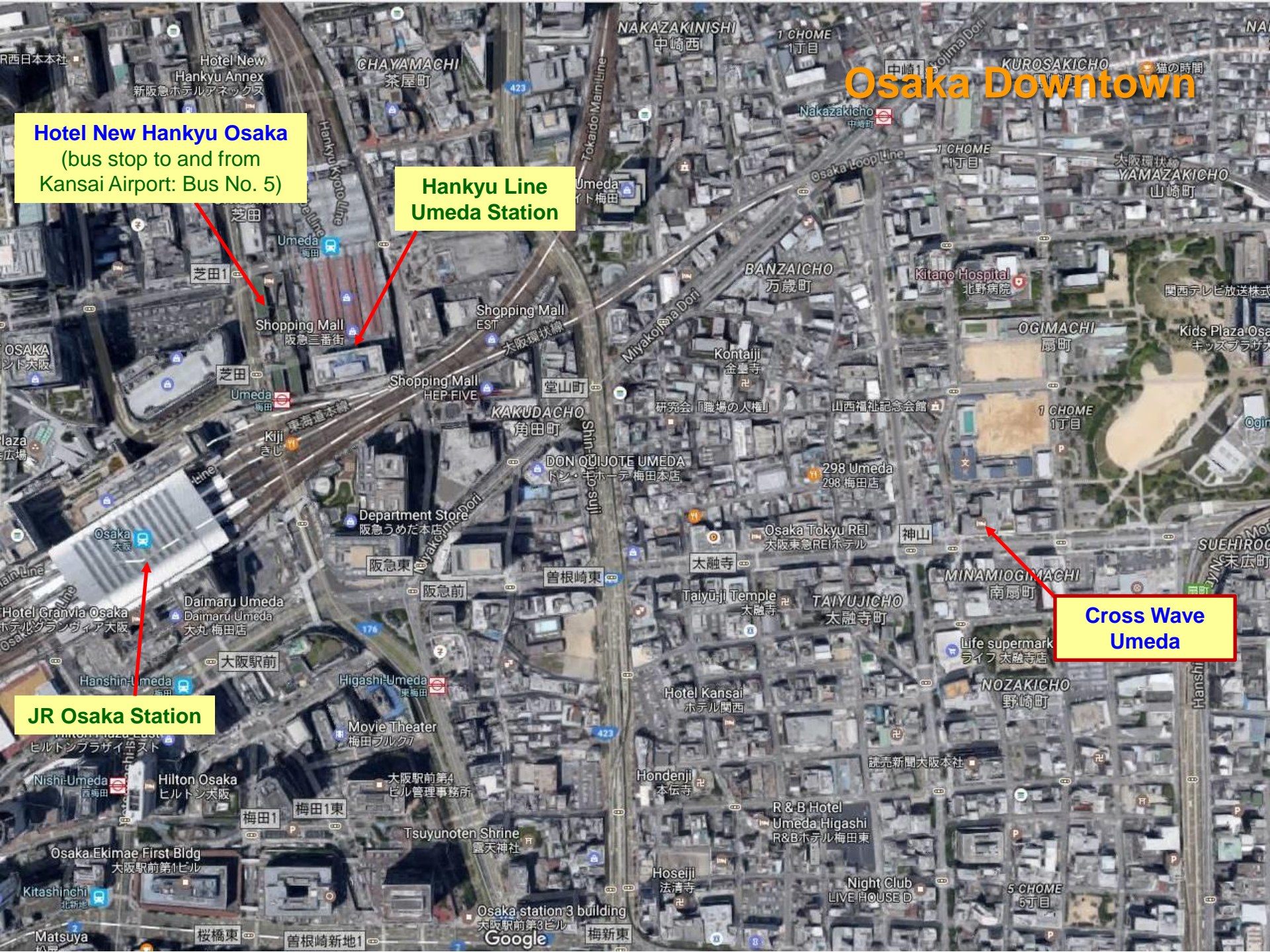
# Osaka Downtown

**Hotel New Hankyu Osaka**  
(bus stop to and from  
Kansai Airport: Bus No. 5)

**Hankyu Line  
Umeda Station**

**Cross Wave  
Umeda**

**JR Osaka Station**





# Cross Wave Area

Ogimachi  
Subway  
Station

Indoor Pool &  
Fitness Center  
(public facility)

Park

X-Wave Umeda

Life  
Supermarket





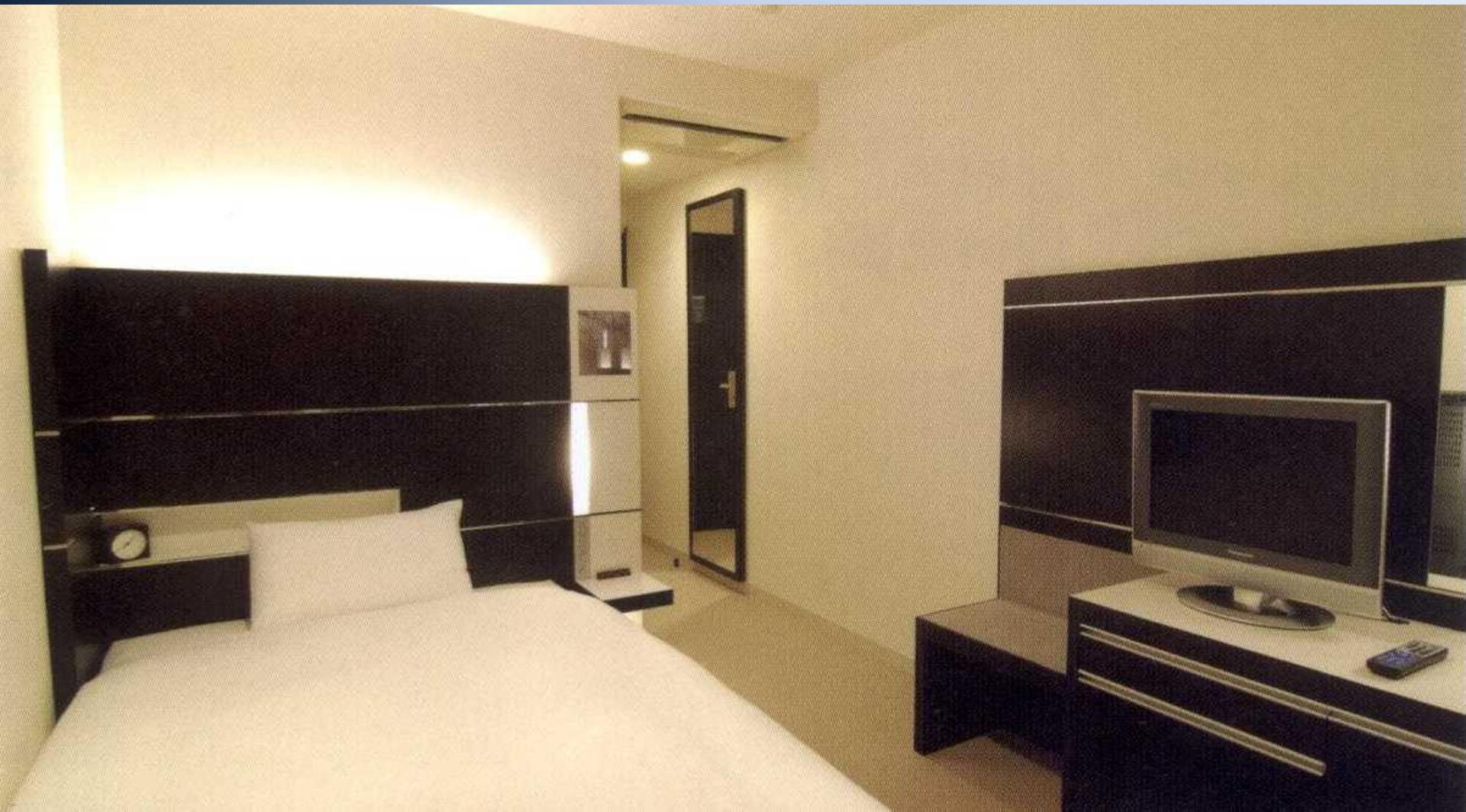
# X-Wave Facilities



Classroom



# X-Wave Facilities



Student Room



# X-Wave Facilities



Cafeteria



# X-Wave Facilities



Meeting Room



# Japan Session Schedule

SUN	MON	TUE	WED	THR	FRI	SAT
March 26	27 1:00 pm Kansai Airport Pick-up  2:00 pm Check- in begins  4:00 – 5:00 pm Orientation  6:30 pm Welcome Dinner	28 8:45 – 11:45 am BE 591 Session 1,2,3 (Lafontaine)  Lunch  1:30 – 3:30 pm BE 591 Session 4,5  Dinner	29 8:30 – 10:15 am BE 591 Session 6,7  10:45 – 1:45 Visit to Obayashi Corporation  2:30 – 4:00 pm BE 591 Session 8  5:00 – 5:30 pm BE Quiz Dinner	30 8:45 – 11:45 am BE 591 Session 9, 10,11  Lunch  1:30 – 3:30 pm BE 591 Session 12,13 <i>Potential program applicants' class visit</i> Dinner	31 8:45 – 11:45 am BE 591 Session 14,15,16  Lunch  4:00 – 5:30 pm BE 591 Midterm Dinner	April 1       Lunch       Dinner
2	3 8:45 – 11:45 am BE 595 Session 17,18,19 Lunch  1:30 – 2:30 pm BE 595 Session 20  5:00 pm Team Assignment Due Dinner	4 8:45 – 11:45 am BE 595 Session 21,22,23  Lunch  1:30 – 3:30 pm BE 595 Session 24,25  Kresge Database Library Orientation Dinner	5 8:45 – 11:45 am BE 595 Session 26,27,28  Lunch    Dinner	6 Study Day 10:30 am Review Session  Lunch    Dinner	7 8:45 – 11:45 am BE 591 Final Exam  Lunch  1:30 – 5:00 pm Visit to Osaka Innovation Hub Dinner	8       Lunch       Dinner
9	10 8:45 – 11:45 am ACC 591 Session 1,2,3 (Lanen) Lunch  1:30 – 2:30 pm ACC 591 Session 4 Dinner	11 8:45 – 11:45 am ACC 591 Session 5,6,7  Lunch  1:30 – 2:30 pm ACC 591 Session 8 Dinner	12 8:45 – 11:45 am ACC 591 Session 9,10,11  Lunch  1:30 – 2:30 pm ACC 591 Session 12 <i>Applicants' class visit</i> Dinner	13 8:45 – 11:45 am ACC 591 Session 13,14,15 Lunch  1:30 – 2:30 pm ACC 591 Session 16 Dinner	14 8:45 – 11:45 am ACC 591 Session 17,18,19 Lunch  1:30 – 2:30 pm ACC 591 Session 20 Dinner	15       Lunch       Dinner
16	17 8:45 – 11:45 am ACC 591 Session 21,22,23 Lunch  1:30 – 2:30 pm ACC 591 Session 24 Dinner	18 8:45 – 11:45 am ACC 591 Session 25,26,27 Lunch  1:30 – 2:30 pm ACC 591 Session 28 Dinner	19 Study Day  Lunch    Dinner	20 8:45 – 10:45 am ACC 595 Final Exam  Lunch  1:00 – 4:00 pm Corporate visit Dinner	21 9:00 am – 6:00 pm Cultural Tour (Nara)  6:30 – 8:00 pm Farewell dinner at X-Wave	22 8:45 am Bus to Kansai Airport; arrive at 10:00 am  Checkout by noon

Meal Allowance



# March 27 Schedule

- ❖ 1:00 pm: Airport pick up
  - Students arrive at Cross Wave around 2:00 pm.
- ❖ 2:00 – 3:00 pm: Check-in
  - Check in at the front desk by 3:00 pm
  - Non-Japanese students will be asked to show their passport.
- ❖ 4:00 – 5:00 pm: Orientation
  - In the classroom (1<sup>st</sup> Floor, #102)
  - Course pack and textbook will be available for pickup.
  - Bring your laptop to set up printer access.
- ❖ 6:00 – 7:30 pm: Welcome Dinner at the 4<sup>th</sup> floor Party Room



# GMBA Applicants' Class Visit

- ❖ March 30 and April 12 afternoon
  - As we did in Seoul, we will invite potential GMBA applicants to classes.
  - Inviting applicants to a class is a common practice in US.
  - Visitors observe the class but do not participate in activities.
  - Please feel free to share your experience with them.
  - If there are anybody qualified to apply to the program and you would like to invite them during the sessions in Asia, please inform GMBA staff.



# Corporate and Culture Tour Schedule

- ❖ Wednesday, March 29
  - 10:30 am – 1:00 pm Meeting and Lunch with Chairman Obayashi at Obayashi Corporation
- ❖ Friday, April 7
  - 1:30 – 5:00 pm Visit to Osaka Innovation Hub  
<http://www.innovation-osaka.jp/>
- ❖ Thursday, April 20
  - 8:45 – 10:45 am ACC 591 Final Exam
  - 1:00 – 4:00 pm Construction Site Tour of Obayashi Corporation and Dinner (in City of Osaka)
- ❖ Friday, April 21
  - 9:00 am Departure to Nara
  - 10:00 – 6:00 pm Cultural tour
  - 6:00 pm Arrival at X-Wave
  - 6:30 – 8:00 pm Farewell dinner at X-Wave



# April 22 Schedule

- ❖ Sending service to Kansai Airport
  - 8:30 am Bus departs X-Wave
  - 9:30 am Arrival at Kansai Airport
- ❖ Early check-out
  - If you are checking out before April 22, inform Takiko in advance.
- ❖ Late check-out
  - All students should check out by 12:00 pm.
  - If you do not check out by 12:00 pm, you will be charged 620 Yen per hour; if you check out after 3:00 pm you will be charged the full day rate of 6,177 Yen.
  - If you are checking out late, please inform Takiko in advance.



# Guest Room

- ❖ One person occupancy
  - Equipped with TV, humidifier, electric water heater, desk lamp, alarm clock, and refrigerator
  - Tap water is drinkable.
  - Key replacement fee is 2,160 Yen.
  - Extra hangers are available in the GMBA Office.
  - CNN channel is available.
  - Basic toiletry offered; you can also purchase them at the Life Supermarket right across the street from Cross Wave.

# Housekeeping

- ❖ Room cleaning service
  - Monday, Wednesday and Friday: cleaning service will be offered between 10:00 am and 3:00 pm.
  - Tuesday, Thursday, Saturday and Sunday: no service
  - Two sets of towels will be placed in your room on Monday and Wednesday and three sets on Friday.
- ❖ Used towel and trash collection continue on no-cleaning days
  - Please put used towels in the towel bin near the elevator and place plastic trash bags outside of your room door by 10:00 am everyday.
  - Room cleaning service is offered only three times a week but X-Wave staff remove trash and used towels daily for sanitary concerns.
- ❖ Slippers; use in your room throughout your stay.



# Classroom and Office

- ❖ Classroom (#102 on the first floor)
  - X-Wave staff will lock the classroom at midnight if no student is present and open at 8:00 am.
  - If you need to access the classroom between midnight and 8:00 am, ask the staff at the front desk to open the door.
  - If you are the last person to leave the classroom after midnight, inform the front desk so that they can lock the door.
  - No food or alcoholic beverages allowed in the classroom.
- ❖ Quiet Study Room (#3 on the first floor)
  - Only for individual study and not for group study
  - 8:00 am – 12:00 midnight
- ❖ GMBA Office (#4 on the first floor)
  - 8:00 am – 5:00 pm on class days; closed on weekends

# Lounge and Breakout Areas

## ❖ 9<sup>th</sup> Floor Lounge

- Refrigerator and microwave oven are available.
- Exclusively for GMBA students from 8:00 am to midnight.

## ❖ Breakout areas

- For small group study and activities, use classroom, 9<sup>th</sup> floor lounge, and breakout areas on the 1<sup>st</sup>, 2<sup>nd</sup> and 3<sup>rd</sup> floors.



# Meals

- ❖ Breakfast:
  - Weekdays: 7:00 to 8:30 am in the 4<sup>th</sup> floor dining room.
  - Buffet; bring your breakfast pass
- ❖ Lunch
  - Meal allowance on all days with exception of March 29 and April 21
- ❖ Dinner
  - Meal allowance on all days with exception of March 27, April 20 and 21.
- ❖ Meal allowance
  - 1,300 Yen for lunch (21 days) and 2,000 Yen (24 days) for dinner: total 75,300 Yen
  - Allowance will be available for pickup at the GMBA office right after the orientation on March 27.
- ❖ Lunch with faculty at the 4<sup>th</sup> floor party room (western dishes)
  - If you do not want to participate, inform Takiko in advance.

# Communication

- ❖ Internet access
  - Wi-Fi in student room, classroom, group study area, and lounges
- ❖ Phone calls
  - You can make calls from your room; will be billed every Monday.
  - To save cost, use internet phone like Skype for long distance and international calls.
  - Phone instruction is on the directory.
- ❖ Copy machine
  - Copy machine is available on each floor.
  - 10 Yen per page; pay with cash or buy a copy card at the front desk.
- ❖ Fax
  - If you want to send or receive a fax, contact the front desk.

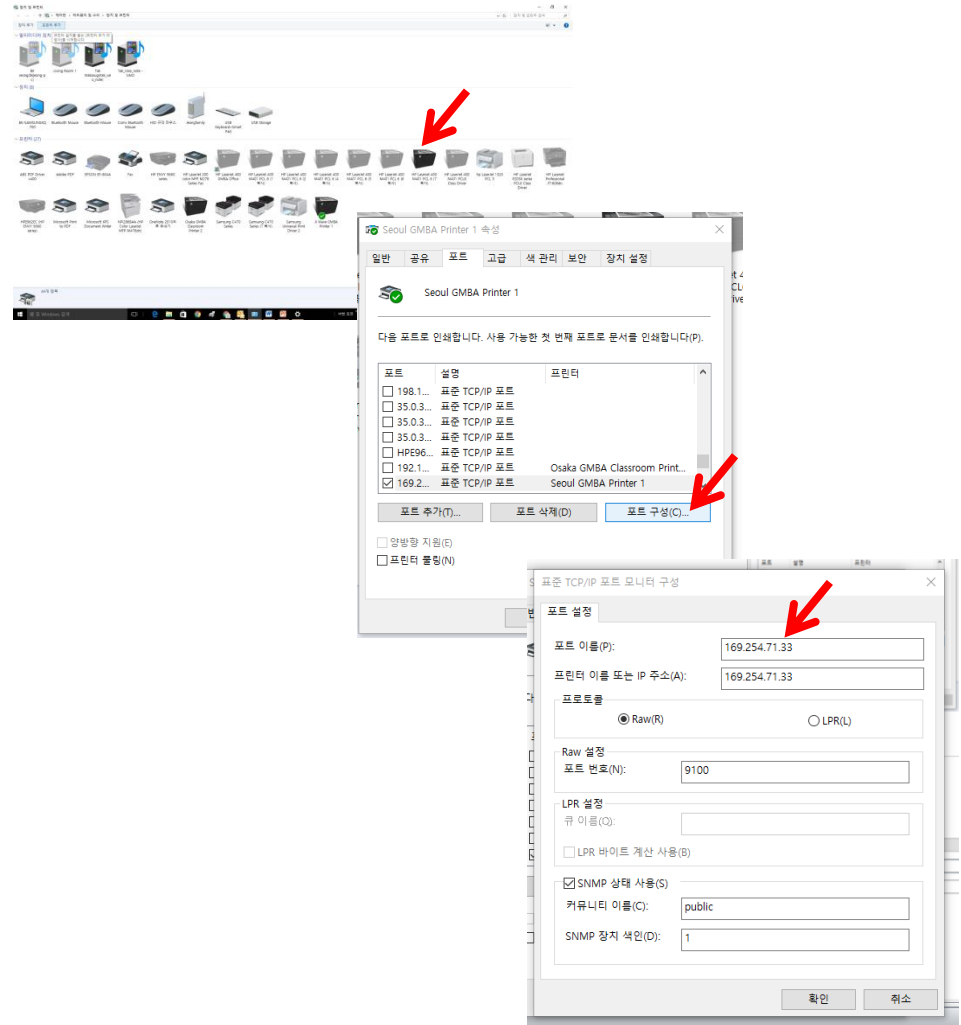


# Internet & Printer Access

- ❖ Wireless internet access throughout the facility.
- ❖ 1<sup>st</sup> - 3<sup>rd</sup> Floor
  - Use either XWAVE(2.4G) or XWAVE(5G) (password: password).
- ❖ 5<sup>th</sup> – 9<sup>th</sup> Floor
  - Use XWAVE (password: 6312umeda).
- ❖ Classroom
  - For internet access only, use XWAVE (2.4G) or XWAVE (5G).
  - For printer access, use Linksys02385 (Password: 9r6mpmqxhg).
  - Linksys02385 is for both internet access and printer usage. However, if many of the students use it together, internet access speed will be slow. Please use XWAVE(2.4G) or XWAVE(5G) when you are just accessing the internet.
  - If you experience technical difficulties accessing printers wirelessly, please use the USB cable hooked on to each printer.

# Printer Setup (option 1)

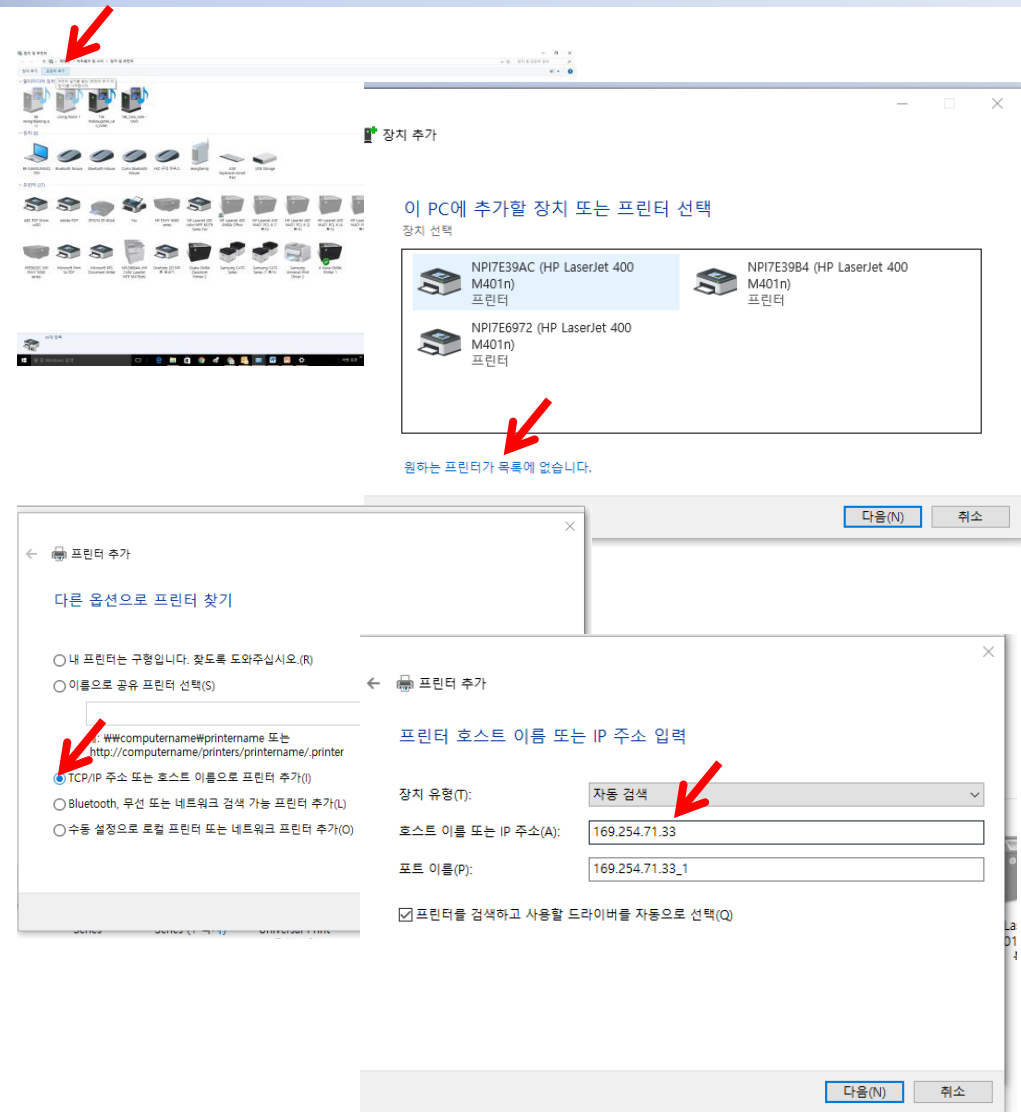
1. Connect to Linksys02385.
2. Go to 'add equipment & printer'
3. Right click the icon of the printer you used in Seoul and select 'printer property'.
4. Select 'port' and then click the 'port composition' button.
5. Replace the IP address with the printer you intended to use.
  - Printer 1 (169.254.71.33)
  - Printer 2 (192.168.1.108)
  - Printer 3 (192.168.1.116)
6. Continue following the direction.
7. Print test page.





# Printer Setup (option 2)

1. Connect to Linksys02385
2. Go to 'add equipment & printer' and select 'add printer'
3. Select 'there is no printer to select' option at the bottom.
4. Select 'add printer with TCP/IP' option
5. Type in the IP of the printer you intend to use.
  - Printer 1 (169.254.71.33)
  - Printer 2 (192.168.1.108)
  - Printer 3 (192.168.1.116)
6. Continue following the direction.
7. Print test page.



# Laundry

## ❖ Laundry

- Two coin-operated laundry rooms on the 5<sup>th</sup> floor.
- Note that one room is exclusively for women.
- Washer 100 Yen, Dryer 100 Yen per use.
- Detergent is dispensed automatically.
- Iron and board are available at the front desk.
- Trouser press machine available in your room.

## ❖ Dry cleaning

- Front desk offers one-day dry cleaning service.
- Drop off by 10:00 am, pick up at 7:00 pm.



# X-Wave Vicinity

## ❖ Fitness facility

- Fitness center is not available at X-Wave.
- Public indoor pool & fitness center within five minute walk at the Ogimachi Park (refer to slide 6)
- Private Fitness Gym
  - Anytime Fitness : Ten-minute walk to the north from X-Wave
  - [http://www.anytimefitness.jp/gyms/JP-1070/osaka-shi-osaka-530-0015 /](http://www.anytimefitness.jp/gyms/JP-1070/osaka-shi-osaka-530-0015/)

## ❖ Shopping

- Various restaurants and shops available around X-Wave.
- Life Supermarket
  - Foods, fashion and general goods
  - 8:00 am – 2:00 am

## ❖ English speaking staff

- Available from 9:00 am to 6:00 pm at the front desk

# X-Wave Policy

## ❖ Attire

- Business casual attire is recommended
- No shorts or slippers in the classroom
- Slippers only in your room
- Be considerate of other guests

## ❖ Smoking

- No smoking in your room
- Smoking is allowed only in the smoking room on the 1<sup>st</sup>, 2<sup>nd</sup> and 3<sup>rd</sup> floors

## ❖ Security

- Main entrance will be closed from 11:00 pm to 6:00 am.
- To enter after 11:00 pm, use key sensor on the side of the door with your room key
- No overnight guests allowed

# Contact Information

## ❖ X-Wave Umeda

- 1-12 Kamiyama-Cho, Kita-Ku, Osaka-Shi, Osaka, 530-0026, Japan
- Phone: 81-6-6312-3200/3111
- Mail: Ms. Mayo Takahara ([m.takahara@x-wave.jp](mailto:m.takahara@x-wave.jp))
- Website: [www.orix.co.jp/x-wave/osaka/index.htm](http://www.orix.co.jp/x-wave/osaka/index.htm) (Japanese only)
- GMBA Office: Room #4 on the first floor

## ❖ GMBA staff email and phone numbers

- Tak Wakasugi: [ayaji@umich.edu](mailto:ayaji@umich.edu), 080-2249-3715
- Takiko Takishita: [takiko@umich.edu](mailto:takiko@umich.edu), 080-8817-7215